



ENGLAND ATHLETICS

saucony

English Cross Country Association

The Saucony National Cross Country Championships 2023

Bolesworth Castle, Chester on Saturday 25th February 2023 at 11.00 am

Online Info

TIMETABLE

Under 13 Boys3K - 12.30pm	Under 13 Girls3K - 11.45pm
Under 15 Boys 4K – 11.25am	Under 15 Girls 4K – 12.45 pm
Under 17 Men6K – 12.05pm	Under 17 Women 5K – 11.00am
Junior Men10K – 14.20pm	Junior Women6K – 13.05pm
Senior Men12K – 15.00pm	Senior Women8K – 13.35pm

Attached is Information sheets giving details of :-

TRAVEL REGISTRATION PARKING TIMETABLE

Please NOTE:

Club Tents can be dropped off near to the club tent area which will be marshalled – but vehicles MUST then be driven to the designated parking areas. See page 5.

ALL ATHLETES MUST WEAR CLUB COLOURS. Failure to do so will lead to disqualification

Presentations will be presented to winning Individuals and teams at 2.00 pm and 4.00 pm in the main marquee No.4 on site Map.

Programmes will be on sale at the event for the price of £3 and will include course maps.

Registration (In Large marquee – No.3 on site map)

Competitors Numbers & Chips are to be collected by appointed Team Managers from the Registration Marquee. In accordance with recent practise the Numbers & Chips for the first 5 races will be available from 9.00am and the other 5 from 11.00am.

Car Parking

Cars are £5, Mini buses £20 and Coaches £30.

Minibuses and Coaches can book via Northern Athletics Office and when they have paid they will receive parking pass. Email - mark@northernathletics.co.uk

Chip Timing:

Chip Timing will again be used . Failure to return your chip will be subject to a £7.00 penalty charge per chip.

NOTE: All clubs **MUST** have paid their Affiliation Fees to **ENGLAND ATHLETICS** otherwise they cannot take part in our championships.

Hon. Championship Secretary

J.G.R.Mower. email josephgmower@hotmail.com



English Cross Country Association

The Saucony National Cross Country Championships 2023

Bolesworth Castle, Chester on Saturday 25th February 2023 at 11.00 am

Travel

Drop & Collect and Taxi Operations

Taxis will be directed via signage to enter the site at Chowley Lodge (No.1 on Map below) where they will be directed to the drop off area in the car park. Very few taxis are expected at this event.

Coaches and Minibuses All coaches and minibuses will be directed by external signage to enter from the A41 into Coach Road and enter at Old Coach Road Gate (No.2 on map below). They will proceed via an internal road to the coach parking area.

Access Routes

Public North

Traffic from the north (M6, M56, M53) will approach Bolesworth using the A41 from the Chester Bypass A55. Signage for the event starts at Milton Green.

Day Race participants and visitors will be directed left into Chowley Lodge (No.1 on map below) on the A41 opposite Green Lane.

Coaches/minibuses will continue on the A41 to Coach Road turning left, then proceeding approximately 1/2 mile turning left onto the Production Sleeper Road at Old Coach Road Gate (No.2 on map below)

Public East

All Traffic from the East (M6) will approach Bolesworth using the A51 and A534 from the Nantwich direction. Signage for the event starts on the A534. All Traffic will be directed to proceed to Broxton Roundabout and turn right for Chester on the A41.

In approximately 1mile, coach and minibus traffic will turn right into Coach Road and proceed to access the site Old Coach Road Gate (No.2 on map below).

Day Race participants and visitors will be directed a further 1/2 mile northbound on the A41 to turn right into Chowley Lodge (No.1 on map below) opposite Green Lane.

Public South

Traffic from the South may well approach using the M6 exiting at Junction 16 and follow the East Ingress route as above. Alternatively, they will approach from Whitchurch on the A41 from the A49/M54 and will approach Bolesworth using the A41.

All Traffic will continue on the A41 to Broxton Roundabout where they will be signed to continue straight on towards Chester. In approximately 1mile, coach and minibus traffic will turn right into Coach Road and access the site at Old Coach Road Gate (No.2 on map below)

Day Race participants and visitors will be directed a further 1/2 mile northbound on the A41 to turn right into Chowley Lodge (No.1 on map below) opposite Green Lane.



ENGLAND ATHLETICS

English Cross Country Association

saucony

The Saucony National Cross Country Championships 2023

Bolesworth Castle, Chester on Saturday 25th February 2023 at 11.00 am

Public West

Traffic from Wrexham will approach Bolesworth using the A534. Signage for the event starts at Broxton Roundabout.

All Traffic will be directed to turn left onto the A41. In approximately 1mile, coach and minibus traffic will turn right into Coach Road and access the site at Old Coach Road Gate (No.2 on map below)

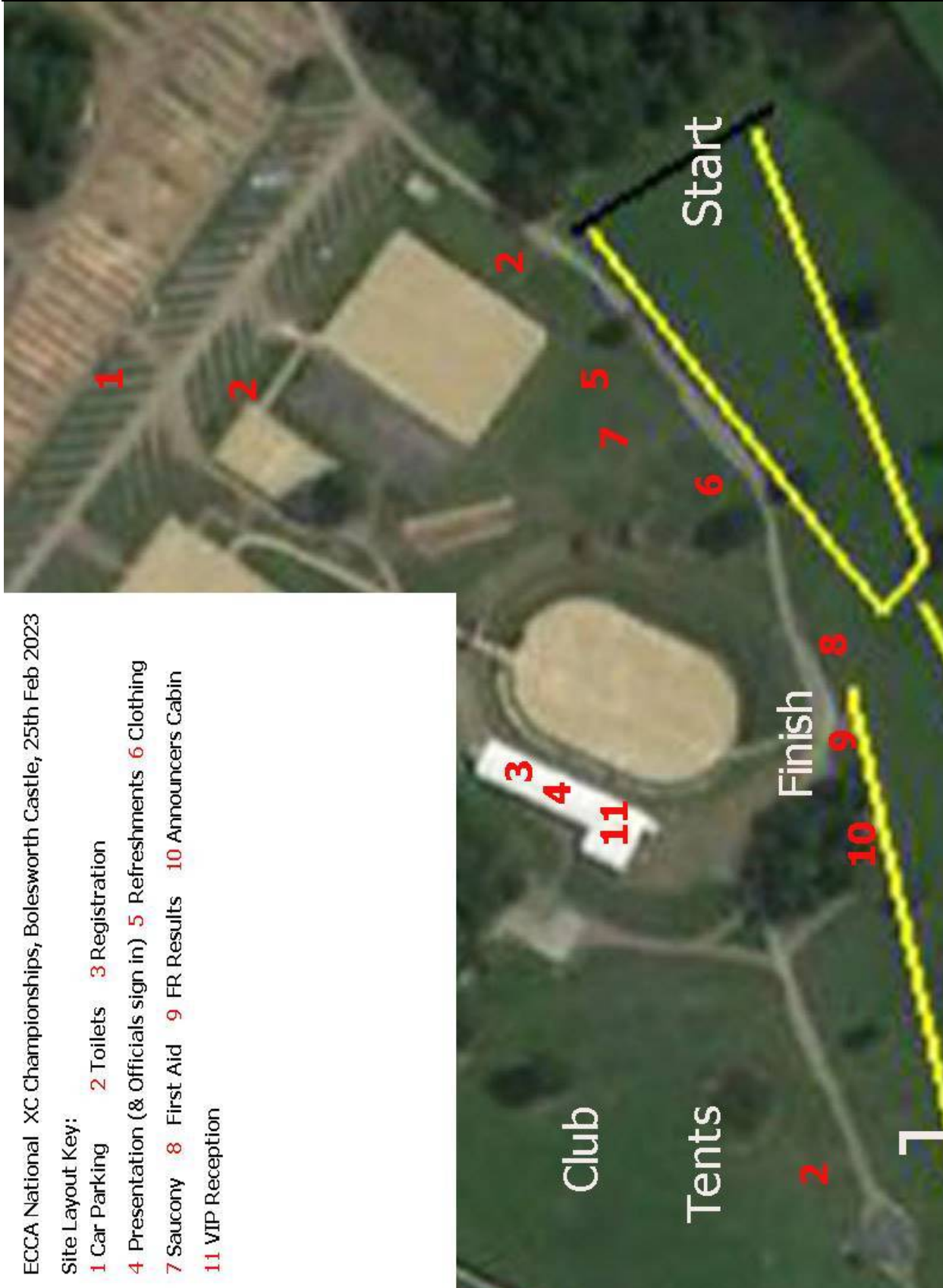
Day Race participants and visitors will be directed a further ½ mile northbound on the A41 to turn right into Chowley Lodge (No.1 on map below) opposite Green Lane.

Post Event Egress Routes

All event Traffic will exit from car park as directed by the traffic Management company

The Saucony National Cross Country Championships 2023

Bolesworth Castle, Chester on Saturday 25th February 2023 at 11.00 am



ECCA National XC Championships, Bolesworth Castle, 25th Feb 2023

Site Layout Key:

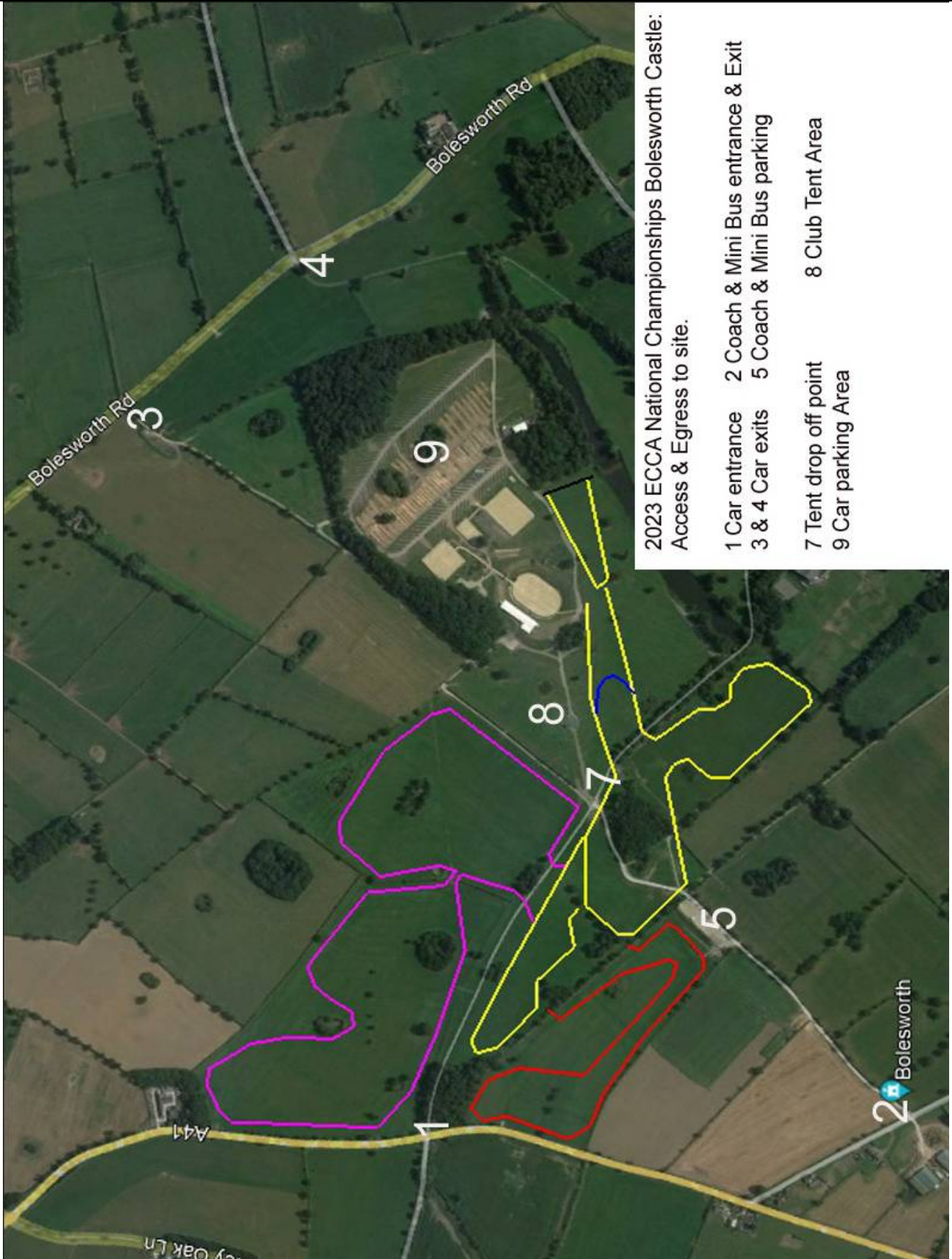
- 1 Car Parking
- 2 Toilets
- 3 Registration
- 4 Presentation (& Officials sign in)
- 5 Refreshments
- 6 Clothing
- 7 Saucony
- 8 First Aid
- 9 FR Results
- 10 Announcers Cabin
- 11 VIP Reception



English Cross Country Association

The Saucony National Cross Country Championships 2023

Bolesworth Castle, Chester on Saturday 25th February 2023 at 11.00 am



2023 ECCA National Championships Bolesworth Castle:
Access & Egress to site.

- 1 Car entrance
- 2 Coach & Mini Bus entrance & Exit
- 3 & 4 Car exits
- 5 Coach & Mini Bus parking
- 7 Tent drop off point
- 8 Club Tent Area
- 9 Car parking Area